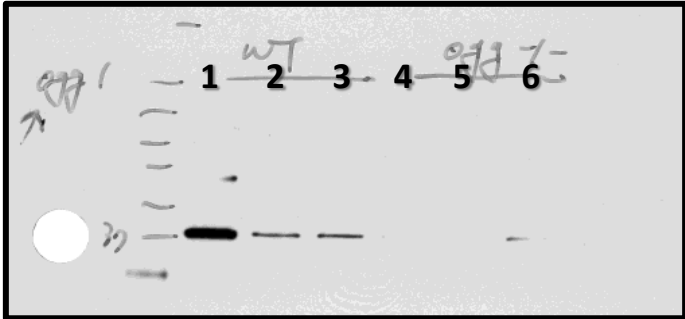


# Supplemental Figure 1:

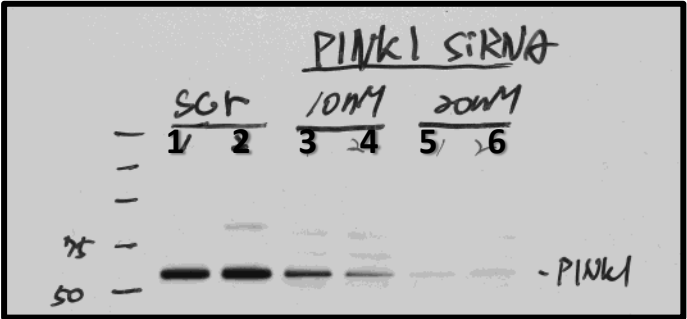
Antibodies used for Western blotting in this study:

| Antibody name | MFR/ catalog #                                  | RRID #     | Reference(s) with uncropped gel image/<br>link to antibody vendor page  |
|---------------|---|------------|---|
| OGG1          | Novus Biologicals,<br>Centennial, CO/ NB100-106 | AB_350049  | Panel 1 (below), Ref 9, 43<br><a href="https://www.novusbio.com/products/ogg1-antibody_nb100-106">https://www.novusbio.com/products/ogg1-antibody_nb100-106</a>                                     |
| Cox IV        | Cell Signaling, Danvers,<br>MA / #4844          | AB_2085427 | Panel 2 (below), Ref 12<br><a href="https://www.cellsignal.com/products/primary-antibodies/cox-iv-antibody/4844">https://www.cellsignal.com/products/primary-antibodies/cox-iv-antibody/4844</a>    |
| GAPDH (14C10) | Cell Signaling/ # 2110                          | AB_561053  | Panel 3 (below), Ref 9, 38<br><a href="https://www.cellsignal.com/products/primary-antibodies/cox-iv-antibody/4844">https://www.cellsignal.com/products/primary-antibodies/cox-iv-antibody/4844</a> |
| PINK1         | Novus Biologicals/<br>NB-100-493                | AB_9222229 | Panel 3 (below), Ref 5, 6<br><a href="https://www.novusbio.com/products/pink1-antibody_nb100-493">https://www.novusbio.com/products/pink1-antibody_nb100-493</a>                                    |

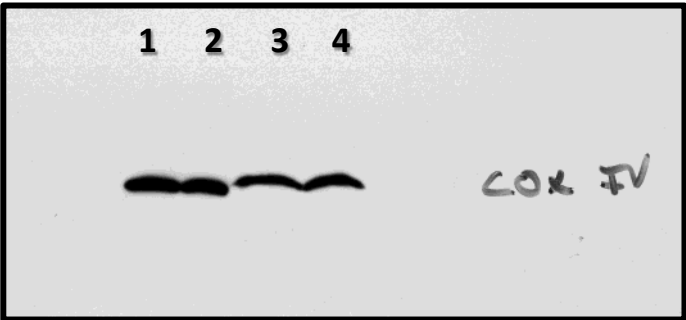
**Panel 1: OGG1-** mouse AT2 cells



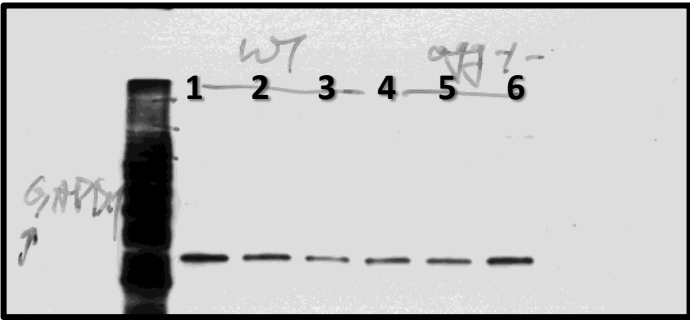
**Panel 3: PINK1-** MLE12 cells



**Panel 2: Cox IV-** mouse lung mitochondria



**Panel 4: GAPDH-** mouse AT2 cells



**Supplemental Figure 1: Western blots showing single/ major band for all antibodies used in this study.**  
 Panel 1- OGG1 blot on AT2 cell protein extracts from 3, WT mice (lanes 1-3) and 3, Ogg1-KO mice (lanes 4-6).  
 Panel 2- Cox IV blot on mouse lung mitochondrial protein extract from liver (lanes 1-2), and lung (lanes 3-4).  
 Panel 3- PINK1 blot on protein extract from MLE cells treated with varying amounts of PINK1 siRNA (lanes 1-6).  
 Panel 4- GAPDH blot on AT2 cell protein extracts from WT mice (lanes 1-3) and Ogg1-KO mice (lanes 4-6).