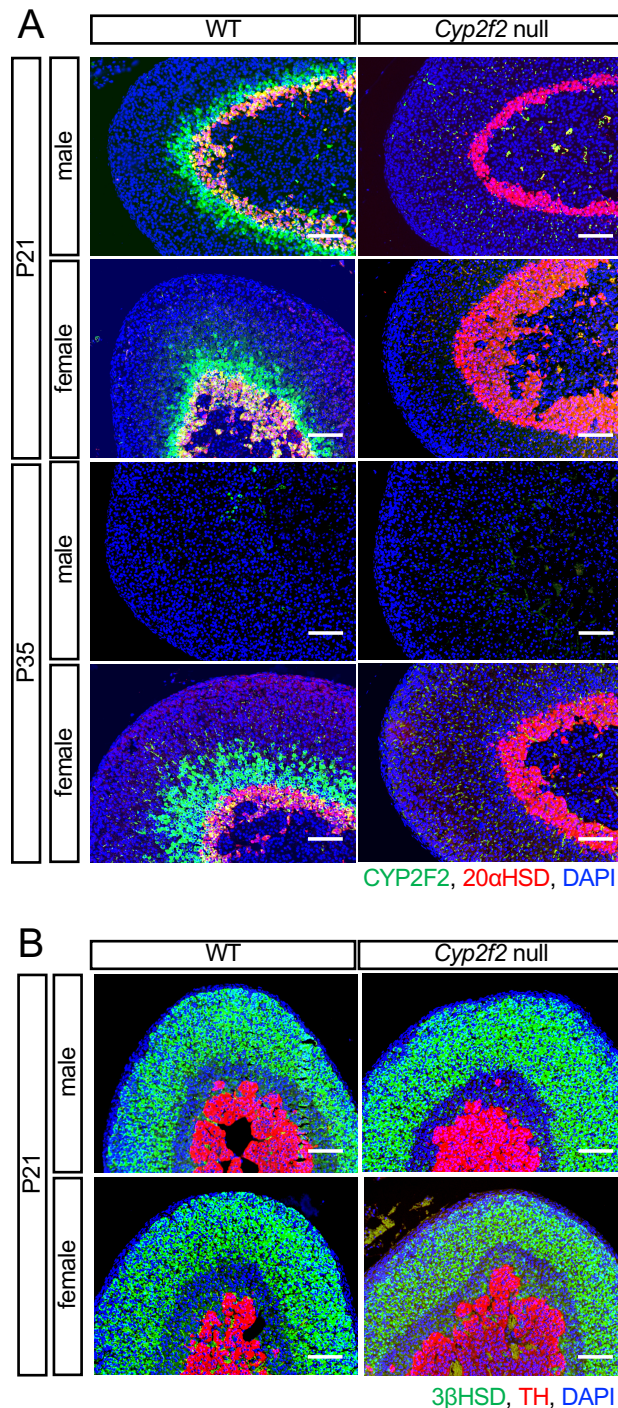


Supplementary Figure



Supplementary Figure. The influence of *Cyp2f2* deficiency on adrenal phenotype.

A, Both male and female *Cyp2f2*-null mice have X-zone at P21. X-zone in male *Cyp2f2*-null mice regresses at P35 similar to the control mice. Note that CYP2F2 immunostaining only gives signals in wild type mice but the null mice, indicating the specificity of the CYP2F2 antibody. **B**, 3βHSD labels the cortex (in green) and tyrosine hydroxylase labels the medulla (in red). No significant difference is identified in *Cyp2f2*-null mice adrenals at P21 in both sexes. DAPI (blue, all cell nuclei). Scale bars, 100 μm.